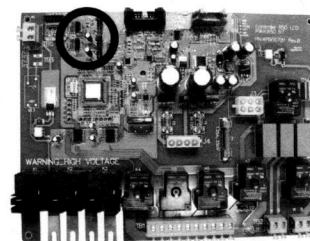


LCD Circuit Board Instructions (North America 60Hz)



The following circuit boards are available as a replacement for the spas outlined in the table below:

6600-728 PWA: LCD 2-Pump 2014 (Models With Two Single Speed Jet Pumps)

6600-730 PWA: LCD 2-Pump 2014 (Models With One 2-Speed & One Single Speed Jet Pump)

6600-392 PWA: LCD 60Hz 3-PMP 2014 (Models With Three Single-Speed Jet Pumps)

These boards use the same mounting footprint as older circuit boards to simplify replacement. Refer to the table below for compatibility information and complete jumper selection details. *To ensure optimum performance, always remember to verify all circuit board jumper settings and spa functions before leaving the work site.*

Compatible LCD Spas		Incompatible LCD Spas
2006-2009 J-400 Models	880 2 Pump Models 880 3 Pump Models	J-385 3-Pump Models
J-300 LCD Models	2002+ 850 1 & 2 Pump Models	Pre-2002 850 Models 850 Maxxus 3-Pump Models

**Software logic is verified on the topside Control Panel display when spa power is first applied.*

Circuit Board Jumper Table					
JP19 Jumper Bank	Jumper	Function	ON	OFF	
<p>Place Jumpers Across Pins As Illustrated</p>	JP19-1	Selects temperature display type	°C	°F	
	JP19-3	Selects 50Hz or 60Hz power setting	Enables Export 50Hz power setting	Enables North American 60Hz power setting	
	JP19-5	Selects light output signal type	Enables LED light output (On-Off)	Enables Incandescent light output (Hi-Med-Low-Off)	
	JP19-7		Not Used		
	JP19-9		Not Used		
	JP19-11		Not Used		
JP9 Jumper Bank	Jumper	Function	ON	OFF	
<p>Place Jumpers Across Pins As Illustrated</p>	JP9-1	Trouble Log	Enables Trouble Log display	Disables Trouble Log display	
	JP9-3	ILOC function	Disables function	Enables function	
	JP9-5		Not Used		
	JP9-7	Selects 50A or 60A logic	Enables 60A logic: Allows 2 jet pumps and the heater to operate at the same time	Enables 50A logic: Forces the heater to turn off when more than 1 jet pump is running.	
	JP9-9	Selects jet pump 2 and 3 logic	Enables pump 2 on -728 & -730 boards Enables pump 3 on the -392 board	Disables pump 2 on -728 & -730 boards Disables pump 3 on the -392 board	
	JP9-11 (See Note2)	Selects 40A Logic	Enables 40A logic: Forces Heater to turn off if any jets pump is running in high speed.	Disables 40A Logic	
	JP9-13	Selects blower and pump logic (used for export models only)	Sundance Logic Only Allows only one jets pump and the blower to operate at the same time.	Allows blower, jets pump 1 and jets pump 2 to operate at the same time.	
	JP9-15	Software Reset	Recalls all factory settings (Install momentarily then remove)	The jumper must remain off during normal operation.	

Note2: This jumper has priority over JP9-7 when installed. Not Applicable for 880 Maxxus/Aspen models.